

# Bassregister

1 **12 3 4 13 123 24 124 34**

2 **12 3 13 4 24 123 124 34**

3 **12 3 4 13 123 24 124 34**

4 **123 24 124 34**

5 **4 13 123 24 34 124**

6 **123 24 124 34**

7

8 **124 34**

9

10

11 **124 34 123 24 4 13 12 3**

12 **123 24 4 13 3 12**

13 **3 12 123 24 4 13 3 12**

14

15 **123 24 123 4 13 12 3**

16 **13 4 12 3 3 12**

17

18 **19**

## Chromatische Intervalle

20 Sekunden

21

22

23

24 kleine Terzen

25



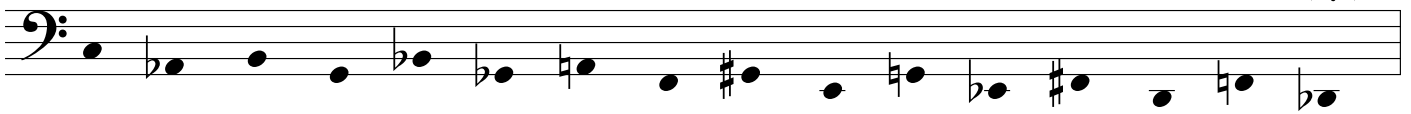
26



27



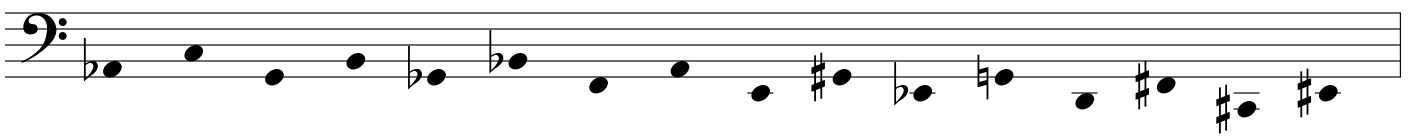
28 große Terzen



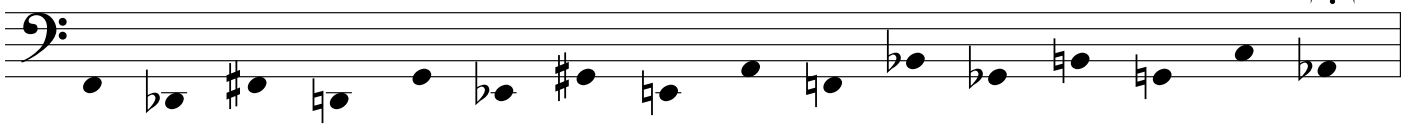
29



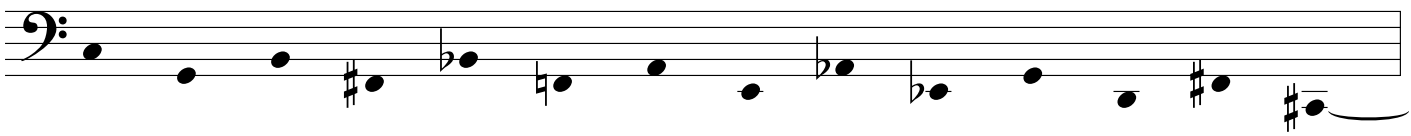
30



31



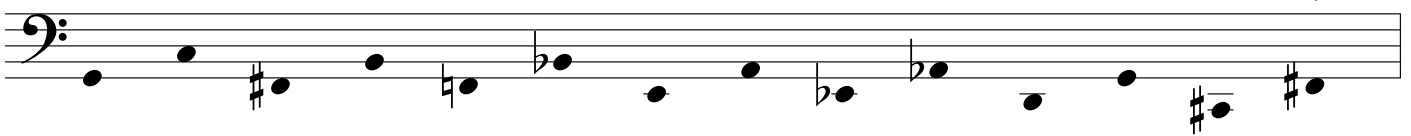
32 Quarten



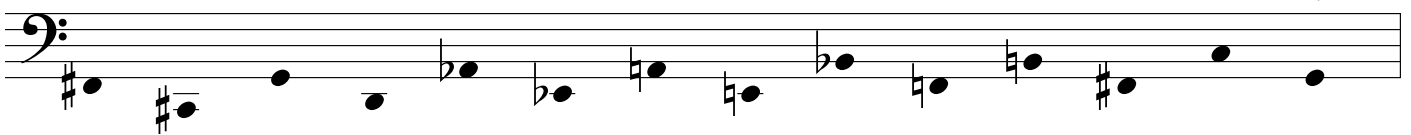
33



34



35



36 Tritoni 37

38 39

40 Quinten 41

42 43

44 kleine Sexten 45 46 47

48 große Sexten 49 50 51